

Artist Bio

Hannah Altman is a Jewish-American artist from New Jersey. She holds an MFA from Virginia Commonwealth University. Through photographic based media, her work interprets relationships between gestures, the body, lineage, and interior space.

She has recently exhibited with the Virginia Museum of Contemporary Art, Blue Sky Gallery, the Pittsburgh Cultural Trust, and Photoville Festival. Her work has been featured in publications such as Vanity Fair, Carnegie Museum of Art Storyboard, Huffington Post, New York Times, Fotoroom, Cosmopolitan, i-D, and British Journal of Photography. She was included in the 2020 Critical Mass and Lenscratch Student Prize Finalists and in the Silver Eye Center For Photography's 2021 Silver List.

She has delivered lectures on her work and research across the country, including Yale University and the Society for Photographic Education National Conference. Her first monograph, *Kavana*, published by Kris Graves Projects, is in the permanent collection of the MoMa and Metropolitan Museum of Art Thomas J Watson libraries.

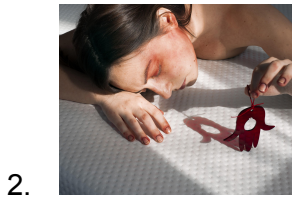
Project Statement

A Permanent Home in the Mouth of the Sun explores Jewish diaspora, world building, and sacred time through photographic narratives that build from interpreted ritual and motifs in Yiddish folklore. Judaic stories often consider the polarity of exile; with one hand we tend to ancestral wounds that compel the notion to shield and assimilate, with the other we knead an ancestral resilience that allows us to continually revisit actions, places, and objects as they fit into new spaces of care and translation. The Jewish ritualization of time is similarly elastic. Through repeated cycles of practice sanctified by the setting sun, the past weaves through the arteries of the present, encouraging photographs born from Jewish memories to perform time in open-ended worlds. To approach an image in this way is not only to ask what it looks like but asks: what does it remember like?

Included Works



Mother, 2019, Archival Pigment Print, 22x27 inches, \$800



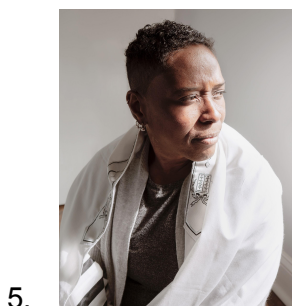
Hamsa, 2021, Archival Pigment Print, 18x22 inches, \$700



Passover Births, 2021, Archival Pigment Print, 18x22 inches, \$700



Shabbos Candles, 2019, Archival Pigment Print, 22x27 inches, \$800



Tallit, 2019, Archival Pigment Print, 18x22 inches, \$700



6. *I Loved the World With You (Mistranslation)*, 2019, Archival Pigment Print, 18x22 inches, \$700



7. *Pulling*, 2021, Archival Pigment Print, 18x22 inches, \$700



8. *Honey Fists*, 2021, Archival Pigment Print, 18x18 inches, \$700



9. *Shofar (Voice Instruments)*, 2021, Archival Pigment Print, 18x22 inches, \$700



10. *Keeping Time*, 2019, Archival Pigment Print, 18x18 inches, \$700



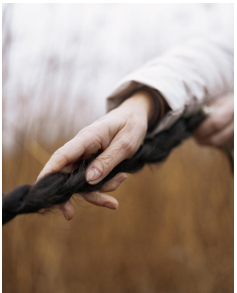
11. *Rest / Echo* , 2020, Archival Pigment Print, 18x22 inches, \$700



12. *Mikveh Immersion*, 2019, Archival Pigment Print, 22x27 inches, \$800



13. *Fragile Pieces*, 2021, Archival Pigment Print, 22x27 inches, \$800



14. *Braid Tug*, 2021, Archival Pigment Print, 18x22 inches, \$700



15. *Chokers*, 2021, Archival Pigment Print, 22x27 inches, \$800



16. *Preserving*, 2021, Archival Pigment Print, 22x27 inches, \$800



17. *Tefillin*, 2021, Archival Pigment Print, 18x22 inches, \$700



18. *Senses*, 2021, Archival Pigment Print, 18x22 inches, \$700



19. *Old Births, New Deaths* 2020, Archival Pigment Print, 22x27 inches, \$800



20. *Ladybug Dybbuk*, 2021, Archival Pigment Print, 18x22 inches, \$700



21. *Indirect Sunlight*, 2021, Archival Pigment Print, 18x22 inches, \$700



22. *Weighted Objects*, 2018, 18x22 inches, \$700



23. *Eating Dates*, 2019, 18x22 inches, \$700



24. *Coyote Shadow*, 2019, 18x22 inches, \$700